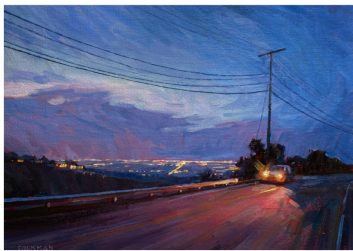




LAGUNA PLEIN AIR PAINTERS ASSOCIATION



PROSPECTUS: 2026 "From Dusk to Dawn" at the LPAPA Gallery & City Hall

SUBMISSIONS:

- **Submissions Open:** January, 2026, through OnlineJuriedShows.com.
- **Submission Deadline:** Monday, June 15, 2026 (*before midnight PDT*)
- **Notifications Sent On or Before:** Monday, June 22, 2026

EXHIBITION OVERVIEW:

- **Exhibition Title:** Annual "From Dusk to Dawn" Juried Nocturne Art Show (<https://lpapa.org/061526-from-dusk-to-dawn-juried-noturne-art-show/>)
- **Online Art Catalog:** Aug 3rd - Sep 18th (*all shows and awards continue to be visible online after show ends*)
- **Online Auction:** Monday, August 3rd (10AM PST) - Thursday, August 6th (8PM PDT)
- **Gallery Finalists Exhibition:** Thursday, August 6th - Monday, August 31st, 2026
- **Art Walk Reception:** Thursday, August 6th (6PM-9PM) (*Awards announcement 7PM*)
- **Gallery Location:** The LPAPA Gallery, 414 N. Coast Hwy., Laguna Beach, CA 92651
- **City Hall Semi-Finalists Exhibition:** Monday, August 10th - Friday, September 18th, 2026
- **City Hall Location:** 505 Forest Ave., Laguna Beach, CA 92651

ART ELIGIBILITY & SPECIFICATIONS:

- **Qualifications:** Open to all LPAPA Signature, Artist and Student Members in good standing; membership needs to be current through **September, 2026**.
- **Subject Matter:** Open to all **nocturne** subject matters created in plein air or in studio between dusk and dawn.
- **Artwork:** Must be original, painted outdoors onsite or in studio within the last year, and not previously shown in a LPAPA Gallery show. No digital artwork will be accepted. All accepted artwork needs to be signed by the artist.
- **Sales:** Accepted Finalist and Semi-Finalist artwork must be available for sale exclusively through LPAPA upon acceptance and for a minimum of 30 days after the shows end.
- **Maximum Size:** Unframed not more than **60 united inches** (Length + Width), Example: 24" x 36" = 60 UI.
- **Minimum Size:** Unframed not less than **18 united inches** (Length + Width), Example: 8" x 10" = 18 UI.
- **Framing & Wiring:** All accepted work must be appropriately glazed and professionally framed, wired, and ready to hang. Wires must provide a minimum 2-inch clearance between the wire and the top of the frame, as needed, to prevent the hook from showing. Incorrectly wired Finalist work will require rewiring and may delay exhibition.

Framing Service Note: Unframed artwork may be delivered/shipped to [Randy Higbee King of Frames](#) for framing; they will deliver the framed work to the LPAPA Gallery and arrange return shipping if the painting is not sold. A percentage of the framing cost is donated to support nonprofit LPAPA's art and education programs.

SUBMISSION INSTRUCTIONS:

- **Entry Fee: \$40.00** Entry Fee for up to 2 painting images; each additional painting image is **\$5.00**. You may submit up to a maximum of 6 painting images. No more than 3 entries per individual artist will be accepted as Finalist and/or Semi-Finalist. Entry Fees are non-refundable and must be paid through OnlineJuriedShows.com.
- **Images:** JPEG images are uploaded through OnlineJuriedShows.com. If you need help entering your images, please contact onlinejuriedshows@gmail.com or call 888-666-1351.
- **Notification:** Notifications to be sent to artists via email by **Monday, May 26, 2026**, or as soon as possible after jurying is completed.

ART DROPOFF & PICKUP:

- **Drop-off Deadline for Gallery Finalists: Tuesday, August 4th, no later than 1PM;** the gallery will be open 10AM-1PM on this Tuesday for hand-carried artwork; enter through side courtyard door near fountain.
- **Drop-off Delivery for City Hall Semi-Finalists: Saturday August 8th** (subject to change based on the City's schedule)
- **Shipping Gallery Finalists:** Shipped work needs to arrive **on or before Friday, July 31st;** do **not** ship for Tuesday or Wednesday delivery.
- **Pickup of Unsold Gallery Work: Tuesday, September 1st;** the gallery will be open 10AM-1PM on this Tuesday for artwork pick. As an alternative, Artists may pick up during regular gallery hours after show closes or arrange and pay for return shipping.

Late Delivery: Accepted finalist artwork delivered after the 1 PM, August 4th deadline may not be hung in time to be included in the awards judging. Accepted semi-finalists artwork delivered to City Hall after the specified day and time-window may be delayed in being exhibited or omitted from the exhibition.

Unclaimed Artwork Policy: Unclaimed artwork remaining at the gallery 15 days after the show closing, without a scheduled pickup or paid return shipping, will be considered abandoned and becomes the property of LPAPA.

Online Exhibition: In addition to the physical gallery show and interactive online Art Catalog and online Silent Auction, LPAPA will showcase the gallery finalists for sale through Artsy: <https://www.artsy.net/partner/laguna-plein-air-painters-association>. Accepted Semi-Finalist work will be exhibited in the online Art Catalog and included in the Preview Auction; Semi-Finalist work is not eligible for awards. Sold Semi-Finalist artwork to be framed and delivered to LPAPA or shipped per LPAPA's instructions.

GALLERY FINALIST AWARDS:

- **1st Place** \$500
- **2nd Place** \$300
- **3rd Place** \$200
- **Honorable Mention** \$100

SALES COMMISSION:

- **Commission:** 50% to Artist, 50% to LPAPA (*LPAPA's commission percentage may be less for Auction sales*).
- **Payment:** Sales proceeds are paid by **ACH Direct Deposit**, typically within 15 days of the show closing. LPAPA may require a W9 prior to payment processing.
- **Liability:** LPAPA, its staff, and volunteers will take the utmost care, however, artists are responsible for insuring their own artwork at their discretion and expense. LPAPA and the City of Laguna Beach will not be responsible for any loss or damage for any reason.

GALLERY LOCATION & CONTACT:

The LPAPA Gallery

414 North Coast Highway, Laguna Beach, CA 92651
(949) 376-3635 | info@lpapa.org

Hours: 11:00 AM – 5:00 PM, Thursday through Monday, and by appointment.

First Thursdays Gallery Hours: 1PM - 9PM; First Thursday Art Walk Reception 6PM - 9PM.

Show Coordinator: Bonnie Langner, LPAPA's Executive Director

Direct: (925) 683-8374 | bonnie@lpapa.org

BY SUBMITTING TO THIS SHOW YOU ARE REPRESENTING THAT YOU HAVE READ AND AGREED TO THE TERMS SET OUT IN THIS PROSPECTUS.